

PART LIST			
CODE	DESCRIPTION	MATERIAL	Q.TY
Y-SA029	Base mounting kit	Various	1
Y-SA032	Common part assy		1



QR12 clutch with base

506.126

08/09/2023

DATE

REV.

23090814

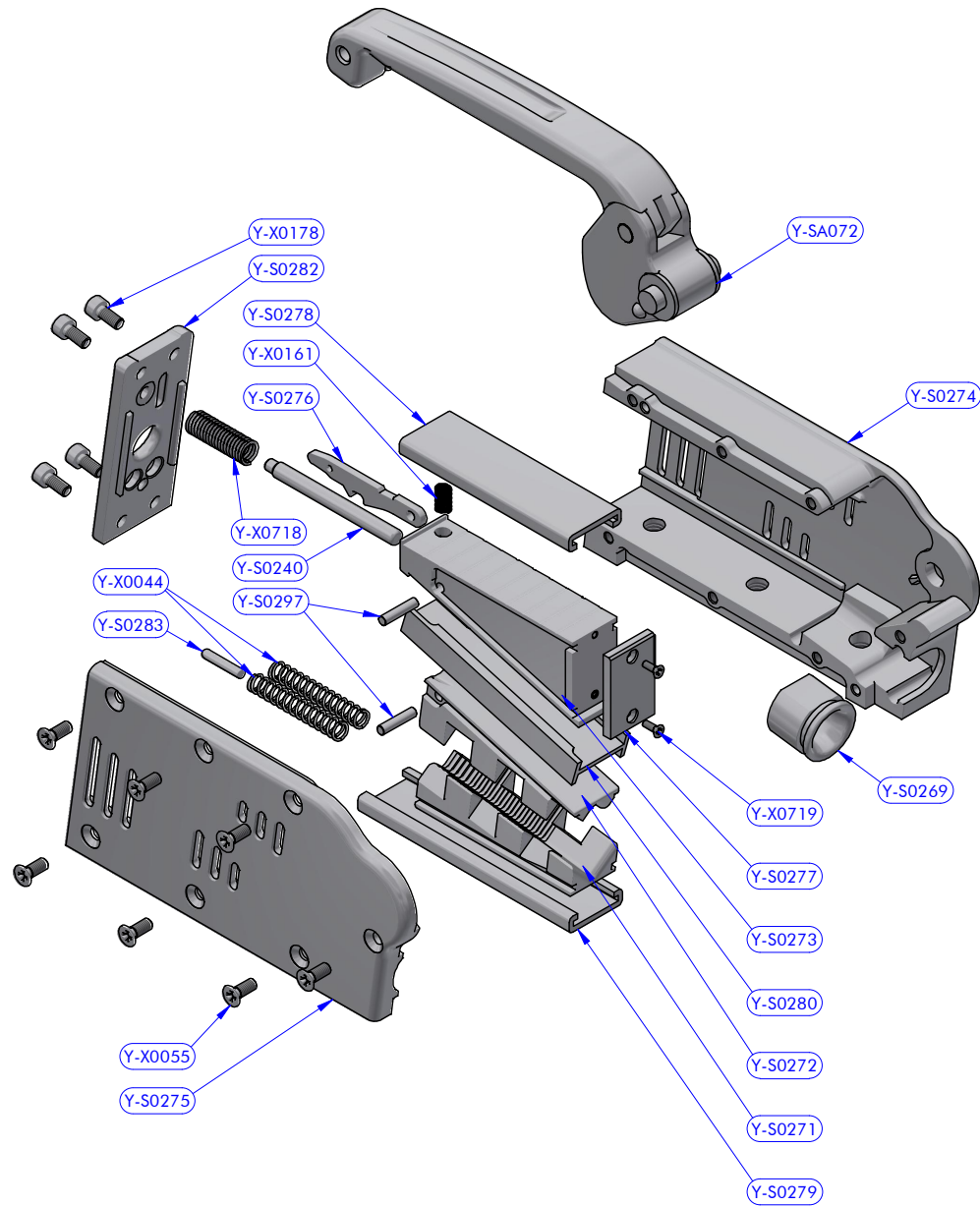
DWG N.

1 / 3

PG.

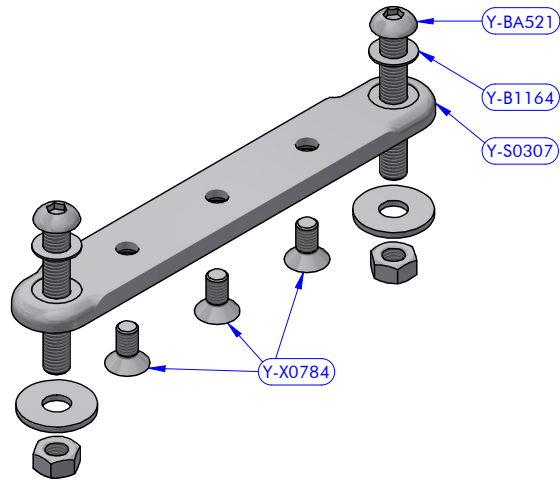
DESCRIPTION

MODEL CODE



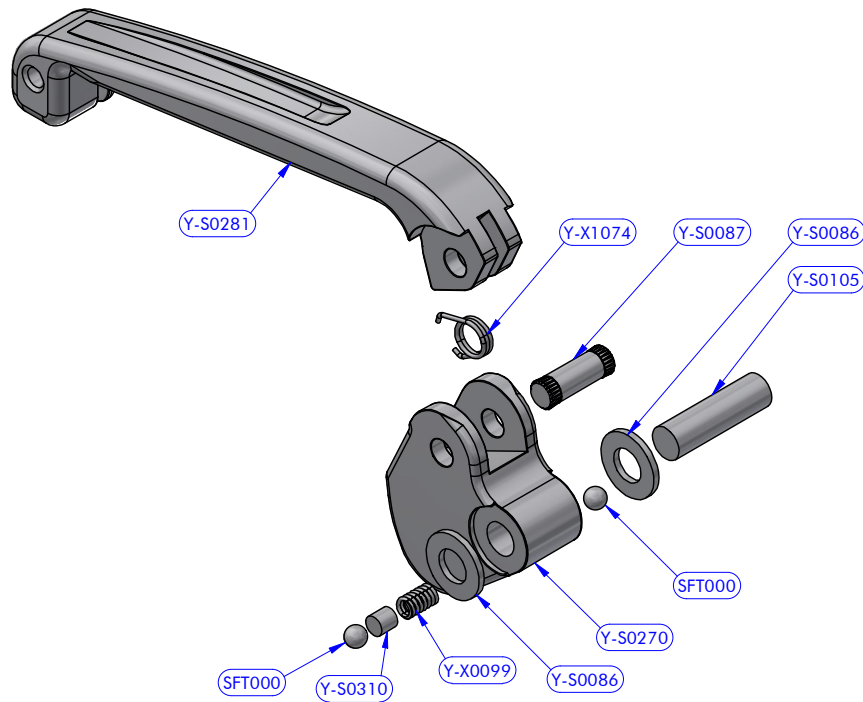
Cod.Y-SA032
Common part assy QR12

PART LIST - Y-SA032			
CODE	DESCRIPTION	MATERIAL	Q.TY
Y-S0240	Pin	S.Steel	1
Y-S0269	Ring	Aluminium	1
Y-S0271	Lower jaw	Aluminium	1
Y-S0272	Upper jaw	Aluminium	1
Y-S0273	Wedge	Aluminium	1
Y-S0274	Body	Aluminium	1
Y-S0275	Cheekplate	Aluminium	1
Y-S0276	Command lever	S.Steel	1
Y-S0277	Pad	Composite fibre	1
Y-S0278	Guide	Polietilene	1
Y-S0279	Guide	Polietilene	1
Y-S0280		Polietilene	1
Y-S0282	Rear cover	Aluminium	1
Y-S0283	Free line mark	Aluminium	1
Y-S0297	Cylinder pin	S.Steel	2
Y-SA072	Lever assy		1
Y-X0044	Compression spring	S.Steel	2
Y-X0055	Screw	S.Steel	7
Y-X0178	Screw	S.Steel	4
Y-X0718	Compression spring	S.Steel	1
Y-X0719	Screw	S.Steel	2
Y-X0161	Compression spring	S.Steel	1



Cod.Y-SA029
Base Upper mounting kit QR12

PART LIST - Y-SA029			
CODE	DESCRIPTION	MATERIAL	Q.TY
Y-B1164	S.Steel washer	S.Steel	2
Y-BA521	Fixing screw kit	S.Steel	2
Y-S0307	Base	Aluminium	1
Y-X0784	Screw	S.Steel	3



Cod.Y-SA072
Lever Assy QR12

PART LIST - Y-SA072			
CODE	DESCRIPTION	MATERIAL	Q.TY
SFT000	Torlon ball	Torlon	2
Y-S0086	Resin washer	POM-C	2
Y-S0087	Cylinder pin	S.Steel	1
Y-S0105	Cylinder pin	S.Steel	1
Y-S0270	Cam	Aluminium	1
Y-S0281	Lever	Aluminium	1
Y-S0310	Cylinder pin	Teflon	1
Y-X0099	Compression spring	S.Steel	1
Y-X1074	Torsion spring	S.Steel	1

antal

QR12 clutch with base

506.126

08/09/2023

DATE

REV.

23090814

DWG N.

3 / 3

PG.

DESCRIPTION

MODEL CODE